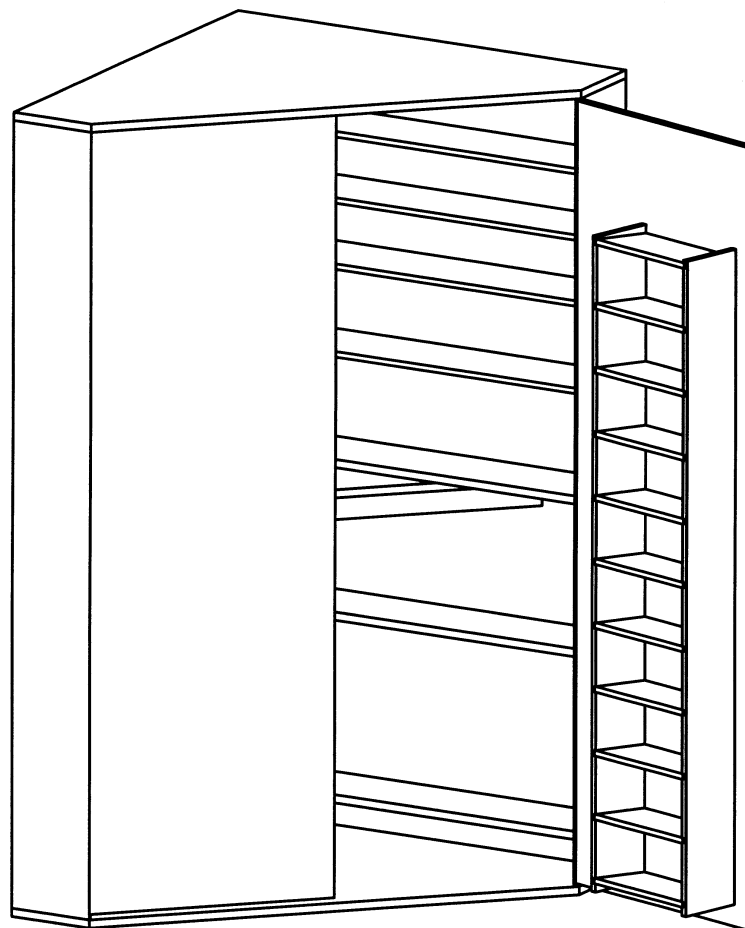


THE INFORMATION CONTAINED IN THIS DRAWING IS THE SOLE PROPERTY OF RAY-VIN ANY REPRODUCTION IN PART OR WHOLE WITHOUT THE WRITTEN PERMISSION OF RAY-VIN.COM IS PROHIBITED.



This reloading bench is based on plans by M.L. McPherson and was printed in the American Rifleman October 1993. I got a poor copy faxed to me by the library system so I redesigned it. These are my drawings.
Regrds, Ray Brandes

ITEM NO.	PART OR IDENTIFYING NO.	NOMENCLATURE OR DESCRIPTION	MATERIAL SPECIFICATION	QTY REQD
PARTS LIST				
UNLESS OTHERWISE SPECIFIED DIMENSIONS ARE IN INCHES TOLERANCES ARE: FRACTIONS DECIMALS ANGLES + .XX+ .XX + 1 .XXX+.XXX		CAD GENERATED DRAWING, DO NOT MANUALLY UPDATE		RAY-VIN.COM
		APPROVALS	DATE	
		DRAWN RVB	10/9/97	
		CHECKED		
MATERIAL 3/4 PLY OR PARTICLE		RESP ENG		RELOADING CABINET SHEET 1 OF 4
FINISH -		MFG ENG		
DO NOT SCALE DRAWING		QUAL ENG		
NEXT ASSY	USED ON	SIZE A DWG. NO.		REV.
APPLICATION		SCALE	CAD FILE:	SHEET 1 of 2

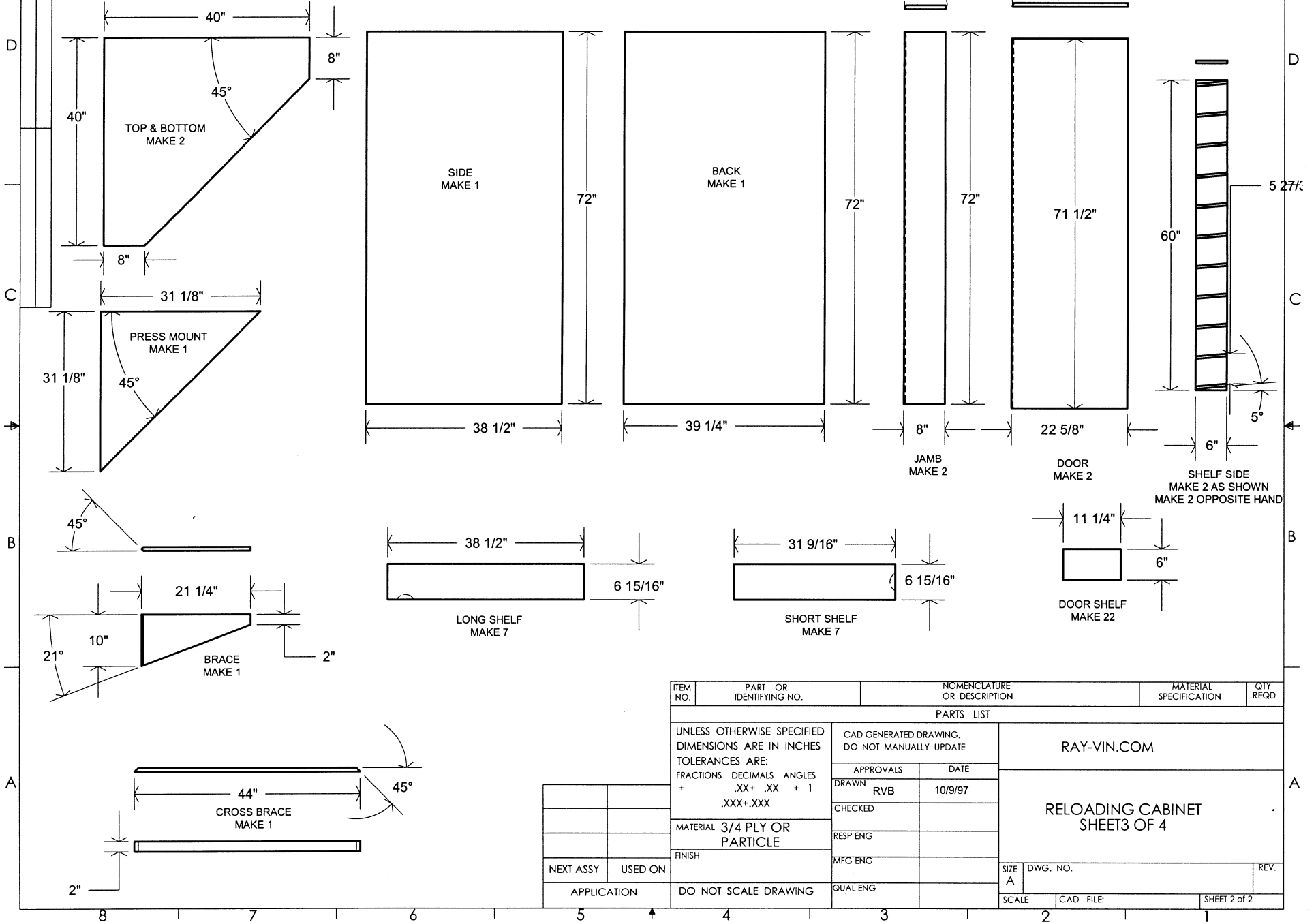
THE INFORMATION CONTAINED IN THIS DRAWING IS THE SOLE PROPERTY OF
RAY-VIN. ANY REPRODUCTION IN PART OR WHOLE WITHOUT
THE WRITTEN PERMISSION OF RAY-VIN IS PROHIBITED.

CONSTRUCTION NOTES:

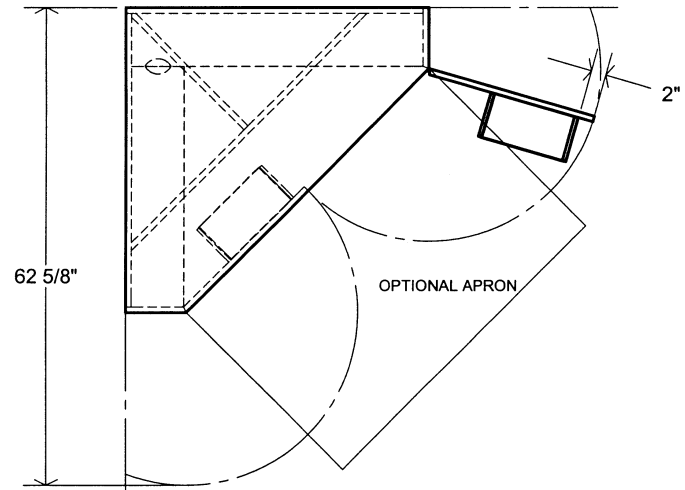
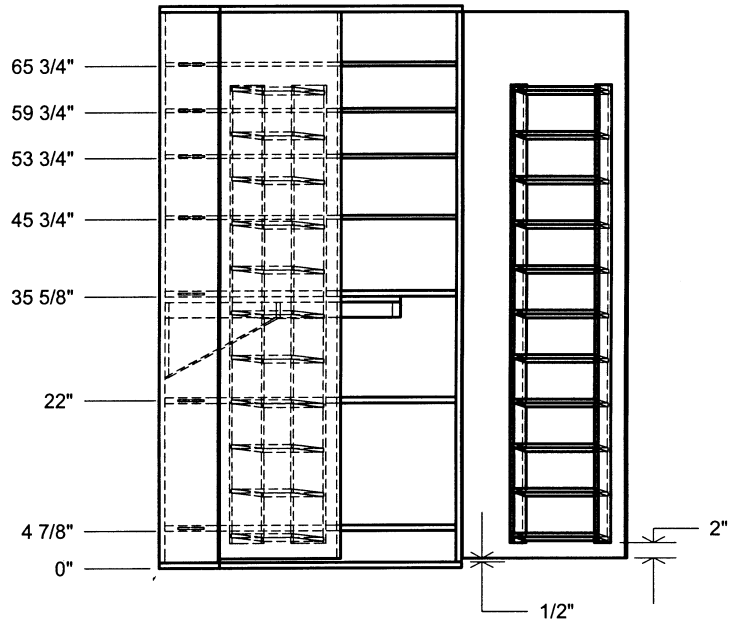
- 1) USE 6" HINGES. IF USING PARTICLE BOARD,
BACK UP HINGES WITH ADDITIONAL THICKNESS.
- 2) LEAVE ROOM UP TOP FOR A 4' FLUORESCENT FIXTURE.
DON'T MOUNT THE DOOR SHELVES TOO HIGH.
- 3) MAKE AN APRON THAT IS THE SAME THICKNESS AS THE BOTTOM
SO YOUR ROLL CHAIR DOESN'T HAVE A STEP TO NAVAGATE.
- 4) LEAVE A 1/2" GAP BETWEEN THE DOOR AND THE BOTTOM SO THE
DOORS DON'T DRAG ON THE BOTTOM OR THE APRON.
- 5) MOUNT A DUPLEX OUTLET INSIDE THE UNIT FOR LAMP POWER ETC.

You may want to substitute a 2 x 4 for
item 10, the cross brace.

THE INFORMATION CONTAINED IN THIS DRAWING IS THE SOLE PROPERTY OF RAY-VIN ANY REPRODUCTION IN PART OR WHOLE WITHOUT THE WRITTEN PERMISSION OF RAY-VIN IS PROHIBITED.



THE INFORMATION CONTAINED IN THIS DRAWING IS THE SOLE PROPERTY OF RAY-VIN ANY REPRODUCTION IN PART OR WHOLE WITHOUT THE WRITTEN PERMISSION OF RAY-VIN IS PROHIBITED.



ITEM NO.	PART OR IDENTIFYING NO.	NOMENCLATURE OR DESCRIPTION		MATERIAL SPECIFICATION	QTY REQD		
PARTS LIST							
UNLESS OTHERWISE SPECIFIED DIMENSIONS ARE IN INCHES TOLERANCES ARE: FRACTIONS DECIMALS ANGLES + .XX+ .XX + 1 .XXX+.XXX		CAD GENERATED DRAWING. DO NOT MANUALLY UPDATE		RAY-VIN.COM RELOADING CABINET SHEET 4 OF 4			
		APPROVALS	DATE				
		DRAWN RVB	10/9/97				
MATERIAL 3/4 PLY OR PARTICLE		CHECKED					
		RESP ENG					
FINISH		MFG ENG		SIZE A DWG. NO.	REV.		
DO NOT SCALE DRAWING		QUAL ENG		SCALE	CAD FILE: SHEET 2 of 2		