



THE PROFESSIONAL RGS RANGE

Parts Lists



MODEL: RGS-366
PRODUCT CODE: 70066



PRODUCT

Brand	DCS
Voltage	110V 60Hz
Model	RGS-366SS
Product Code	70066

Fisher & Paykel Appliances Inc.

DCS Customer Care

695 Town Center Drive, Suite 180 Costa Mesa.
CA 92626-1902
USA

Customer Care: 1-888-936-7872
Fax: (714) 372-7003
Email: customercare@fisherpaykel.com
www.dcsappliances.com

COPYRIGHT® FISHER & PAYKEL LTD 2006 - ALL RIGHTS RESERVED

CONTENTS

BURNER COMPONENTS	6
MANIFOLD COMPONENTS	8
OVEN COMPONENTS	10
STRUCTURE COMPONENTS	12
DOOR COMPONENTS.....	14

GUIDE TO USING THIS MANUAL

The model covered by this manual is listed on the front cover.

The information detailed in this manual is subject to change without notice. The latest version is indicated by the reprint date and replaces any earlier editions.

The front cover picture shows the type of product and may not necessarily be an exact image of the model covered by the manual.

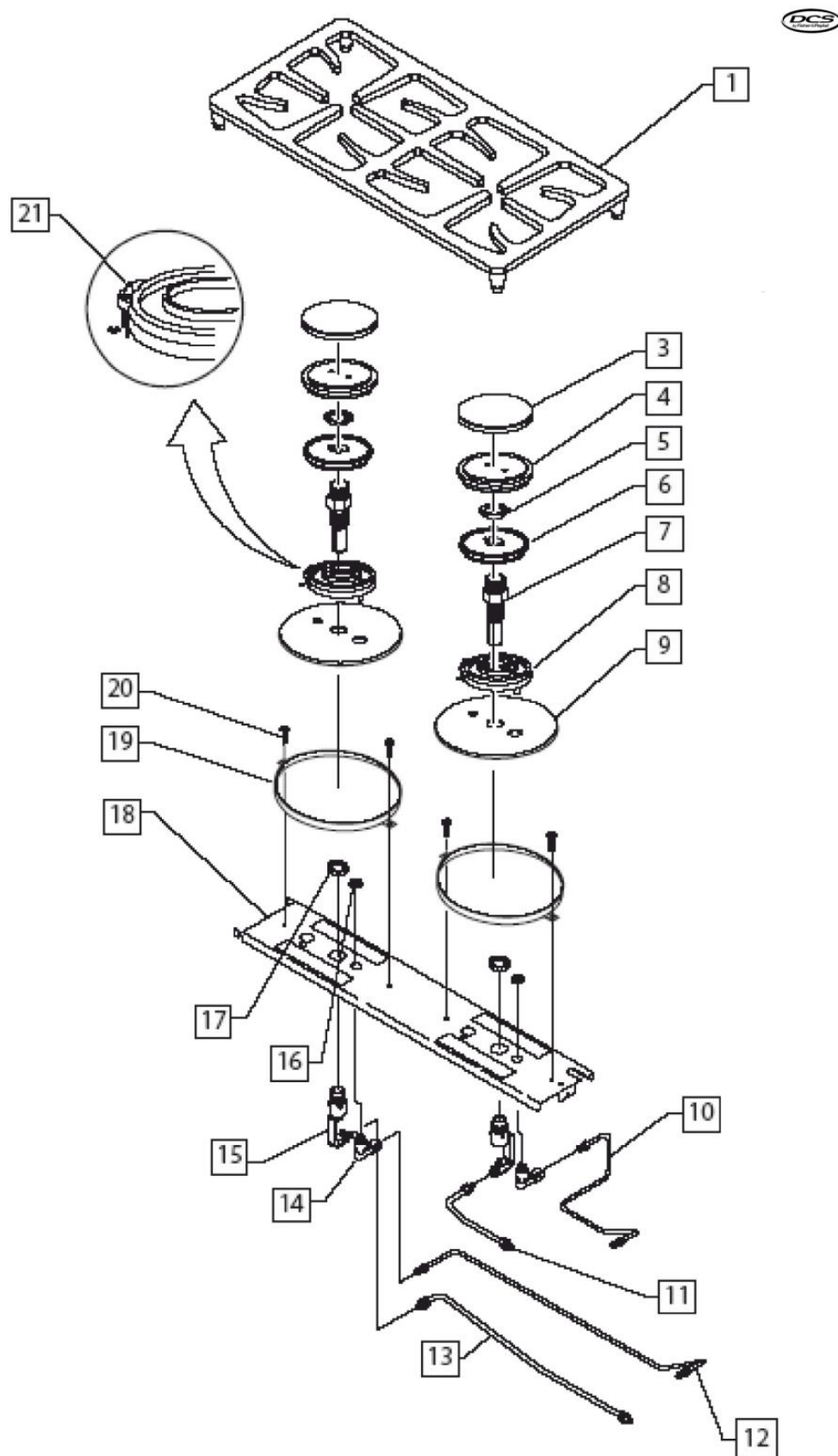
Kit Parts

Kit components are shown in *italics*. Where a part number is shown against the descriptions for these kit components, they are also available as separate items. In addition, some parts may be supplied with these kits that are not available as separate items, and are therefore either not listed, or a part number is not shown against the part description in this manual.

Parts List Key

<i>italics</i>	Kit components or parts included are shown in <i>italics</i> . Refer to above notes: Kit Parts.
NI	As a part reference, indicates the part is not illustrated on the diagram.
NOT USED	As a part number, indicates the diagram part reference is not used in this manual.

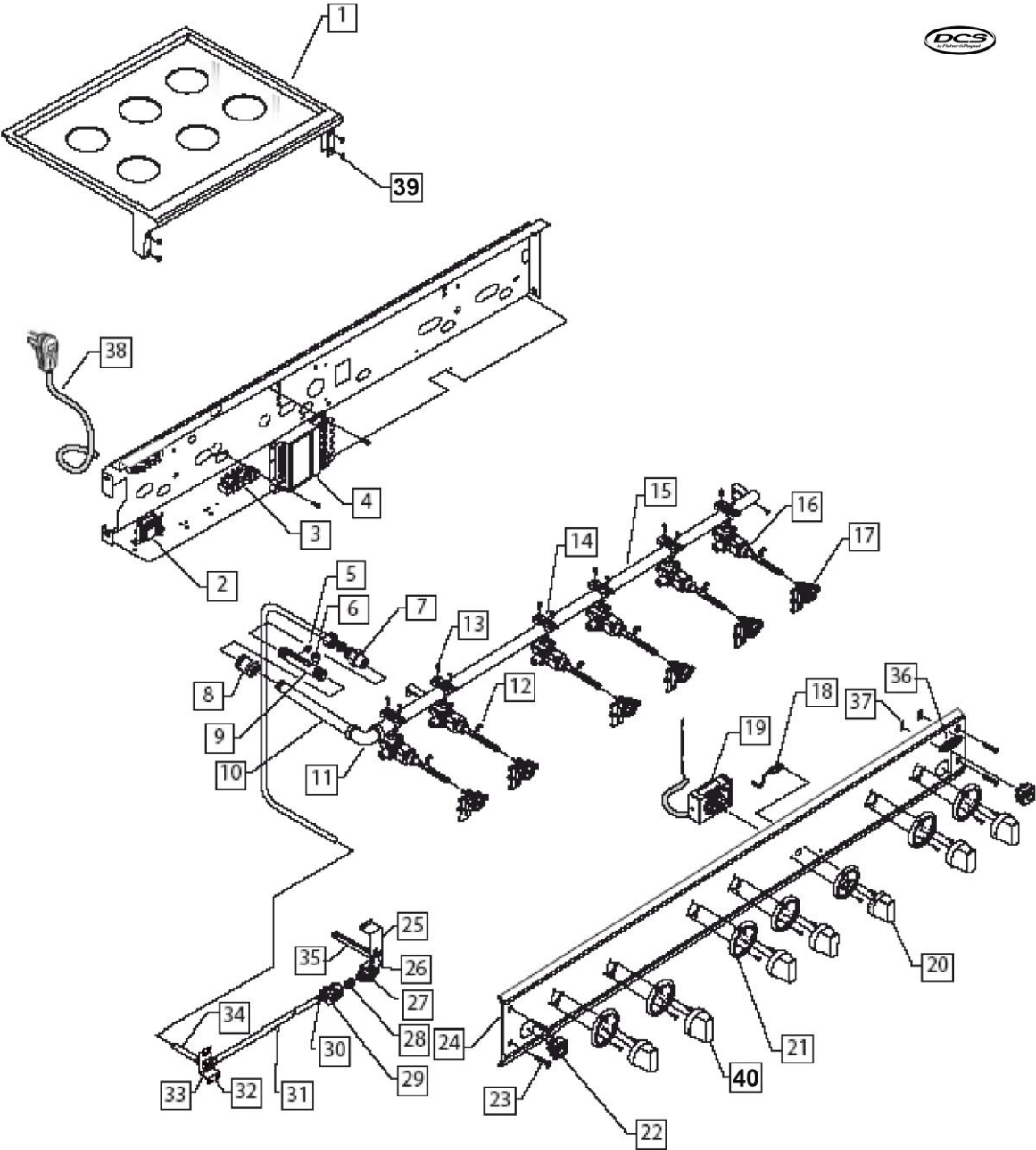
BURNER COMPONENTS



BURNER COMPONENTS

REF	PART	DESCRIPTION
1	210600	GRATE SIDES
	210613	GRATE CENTER
3	210608	D BURNER CAP
4	210610	RING D PORT
5	211518	NUT FOR VENTURI
6	210606	RING D SIMMER
7	252007	KIT BASE & VENTURI D BURNER
8	210654	D BASE ASSY
9	216694	VOLCANO PORC.
10	216875	TUBING SIMMER FRONT
11	216874	TUBING MAIN FRONT
12	216877	TUBING SIMMER REAR
13	216876	TUBING MAIN REAR
14	240405	JET HOLDER SIMMER D LP
	240404	JET HOLDER SIMMER NAT
15	210537	JET HOLDER D 17.5K
	210532	JET HOLDER MAIN D 15K LP
16	211502	NUT SIMMER JET HOLDER
17	210468	NUT M22 JET HOLDER
18	219120	KIT BURNER SUPPORT RGS/RDS 366
19	219120	KIT BURNER SUPPORT RGS/RDS 366
20	211238	SM 10 X 1/2 SL TD HWH SMS, ZIN
21	217994	KIT IGNITOR, SPRING AND CLIP

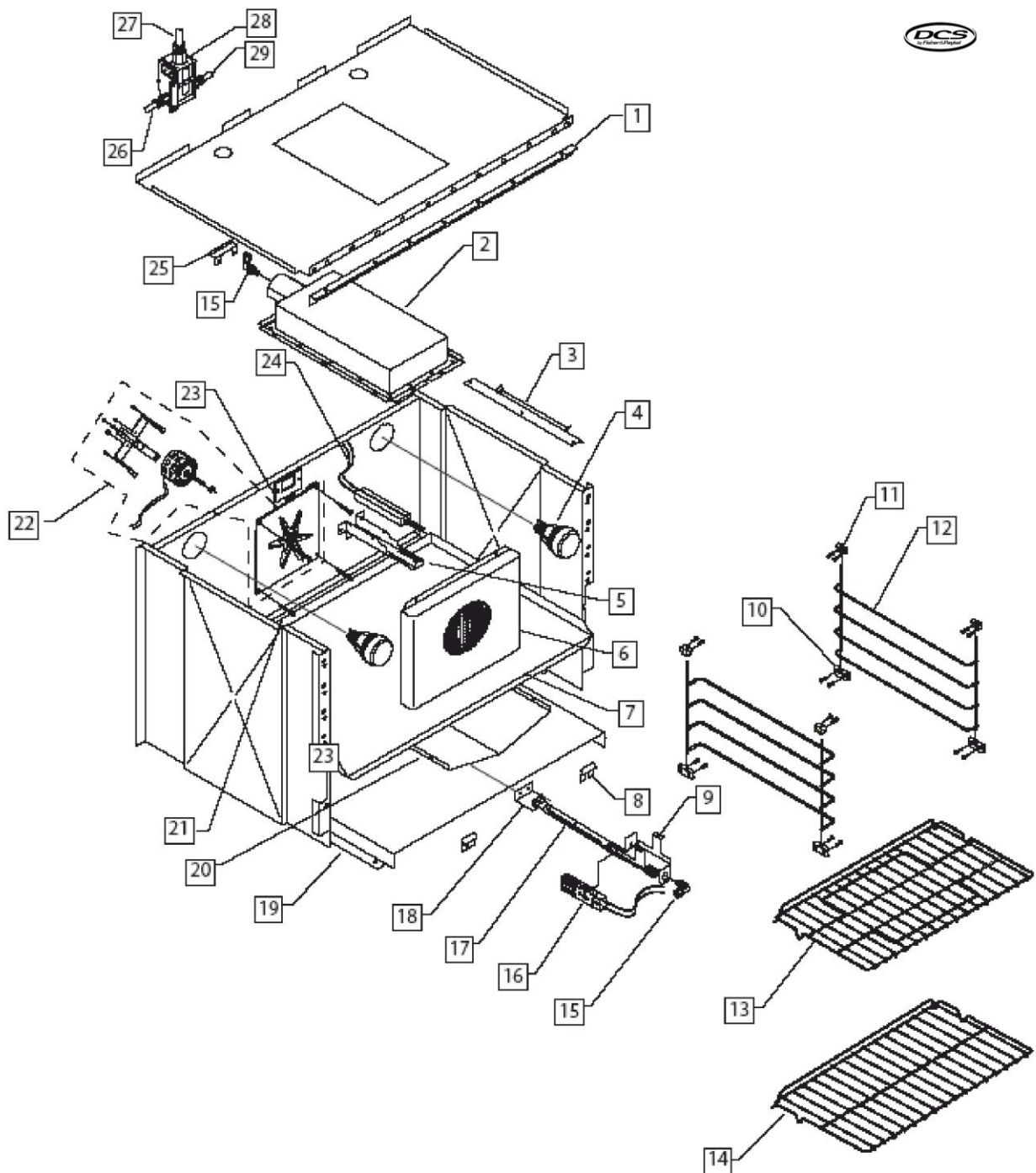
MANIFOLD COMPONENTS



MANIFOLD COMPONENTS

REF	PART	DESCRIPTION
1	216780	COOKTOP W/A RDS366 STNL STL
2	238382	TRANSFORMER, 120/230V, 30ma
3	211540	TERMINAL BLOCK
4	211813	SPARK MODULE 6 PT
5	211379	PIPE PLUG 1/8 HEX COUNTERSUNK
6	212122	ELBOW 3/8 T.O.D - 1/8 NPT (M)
7	212361	FITTING(F)1/2 NPT TO 5/8 TUBE
8	212138P	COUPLING 1/2 NPT BLK (PKD)
9	212252	OVEN FEED ADAPTER
10	212124	PIPE 1/2 NPT 9.82L
11	212164	ELBOW 1/2 - 1/2 FEMALE
12	210508P	C-CLIP VALVE STEM (PKD)
13	211342	HEX HD BOLT 10-32 X 1 FULL ZN
14	219506	BOARD 1 X 4 X 19.5
15	237212	MANIFOLD W/A RGS36
16	210897	VALVE DUAL FLOW D LP
	210896	VALVE DUAL FLOW 6 OC NAT
17	211804	SWITCH IGNITOR
18	211571	PILOT LIGHTS
19	210779	THERMOSTAT OVEN BROIL
20	211015	KNOB THERMOSTAT BAKE/BROIL
21	210935	BEZEL, CHROME PLATED
	210936	BEZEL (PLATED) BRASS
22	211625	LIGHT SWITCH
23	211300	SCREW 8-32 X 1 TORX FL HD
24	216833	VALVE PANEL RGS366 PTD
25	216899	HOLDER ELBOW PLATE RGS
26	216857	ELBOW PLATE W/A
27	212167	SHUT OFF VALVE-1/2
28	212123P	1/2 NPT CLOSE NIPPLE BLK (PKD)
29	210663	REGULATOR LP/NG
30	212349	FITTING ASSY 5/8 TUBE
31	216927	TUBING BOTTOM RGS36
32	216774	BRACKET ELBOW SUPPORT
33	212380	ELBOW COMPRESSION 5/8 TUBE
34	216888	TUBING MANIF/ REGULATOR RGS36
35	212125	INTAKE PIPE 22.00
36	211997	LOGO, DCS, 3 1/8
37	211419P	LOGO - CLIP (2 PACK)
38	211860	CORD SET POWER SUPPLY RGS/CS
39	211410	NUT W/RET 8-32
40	211190	KNOB SURF BURNER INTERIM

OVEN COMPONENTS

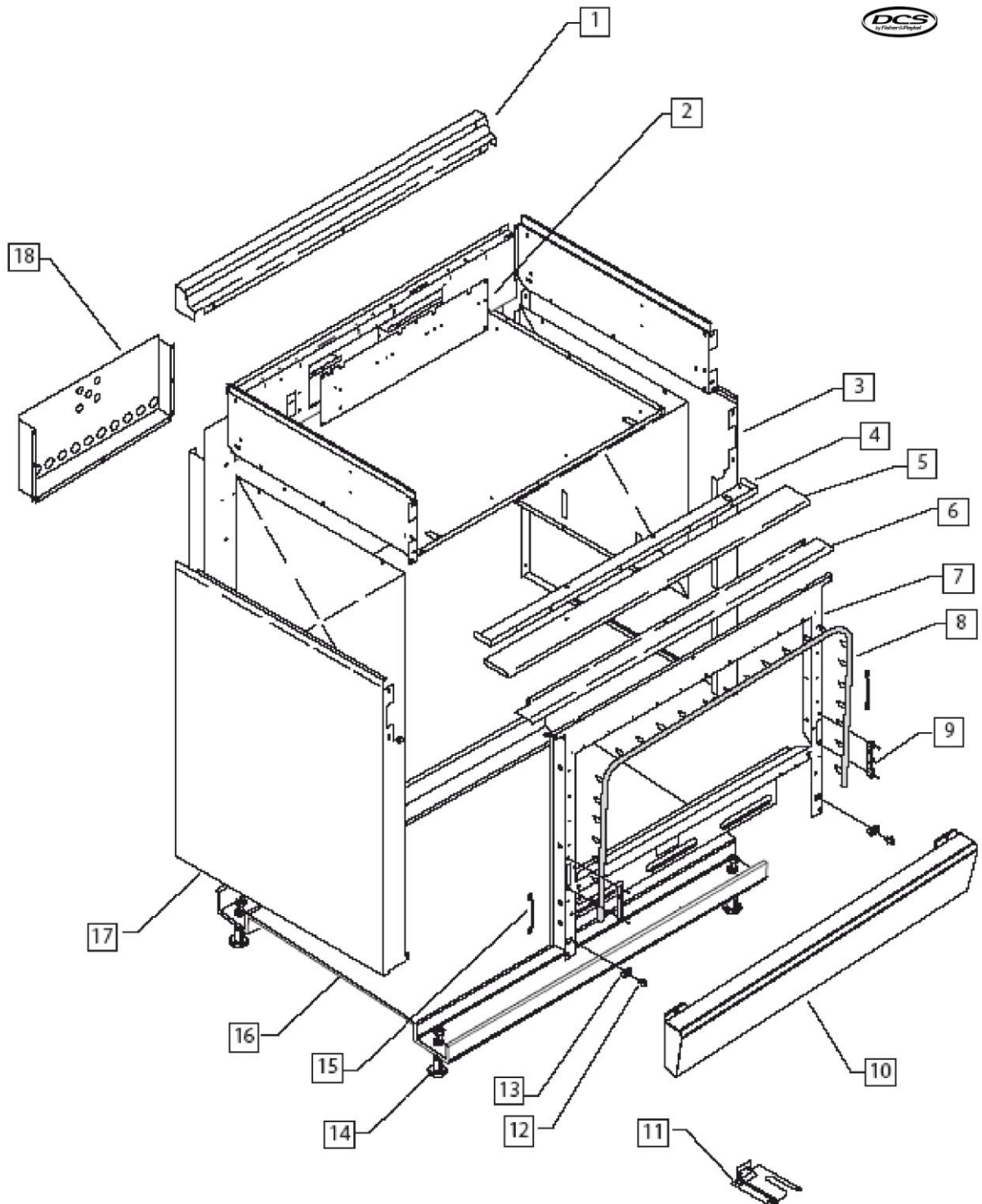


DWG000539 07 JUNE 2006

OVEN COMPONENTS

REF	PART	DESCRIPTION
1	225414	FLUE GUARD BRACKET FRONT
2	214645	I/R BURNER - ASSY.
3	216463	BULB HOLDER
4	211689	OVEN LAMP ASSY
5	214689	CLAMP IGNITER W/A
6	215992	BAFFLE OVEN W/A
7	215881	OV BTM LINER W/A 27 PORC.
8	214658	CLIP AIR ADJUSTMENT
9	214637	BRKT IGNITER/ELB
10	214655	BRACKET RACK SPRT
11	214604	BRACKET-RACK
12	212469	OVEN RACK SUPPORT
13	212405	OVEN RACK RG
14	212404	OVEN RACK BROIL GCRG36
15	212139P	ELBOW 3/8-27-9/16-24 (PKD)
16	211541	IGNITER - (SMALL)
17	210361	OVEN BURNER C.R.
18	225411	BURNER SUPPORT BRKT. GCRG36
19	214654	AIR CHANNEL
20	214650	FLAME SPREADER GCR36
21	230570	ANGLE BACK LINER
22	215798	CONV. MOTOR ASSY
23	214656	COVER IGNITER CLAMP
24	211542	IGNITER I/R (LARGE)
25	214657P	AIR SHUTTER (PKD)
26	215647	TUBING DUAL VALVE TO OVEN BURN
27	216891	TUBING MANIF/DUAL VALVE RGS36
28	210782	DUAL THERMAL GAS VALVE
29	216515	TUBING CUT 13.125 LONG

STRUCTURE COMPONENTS

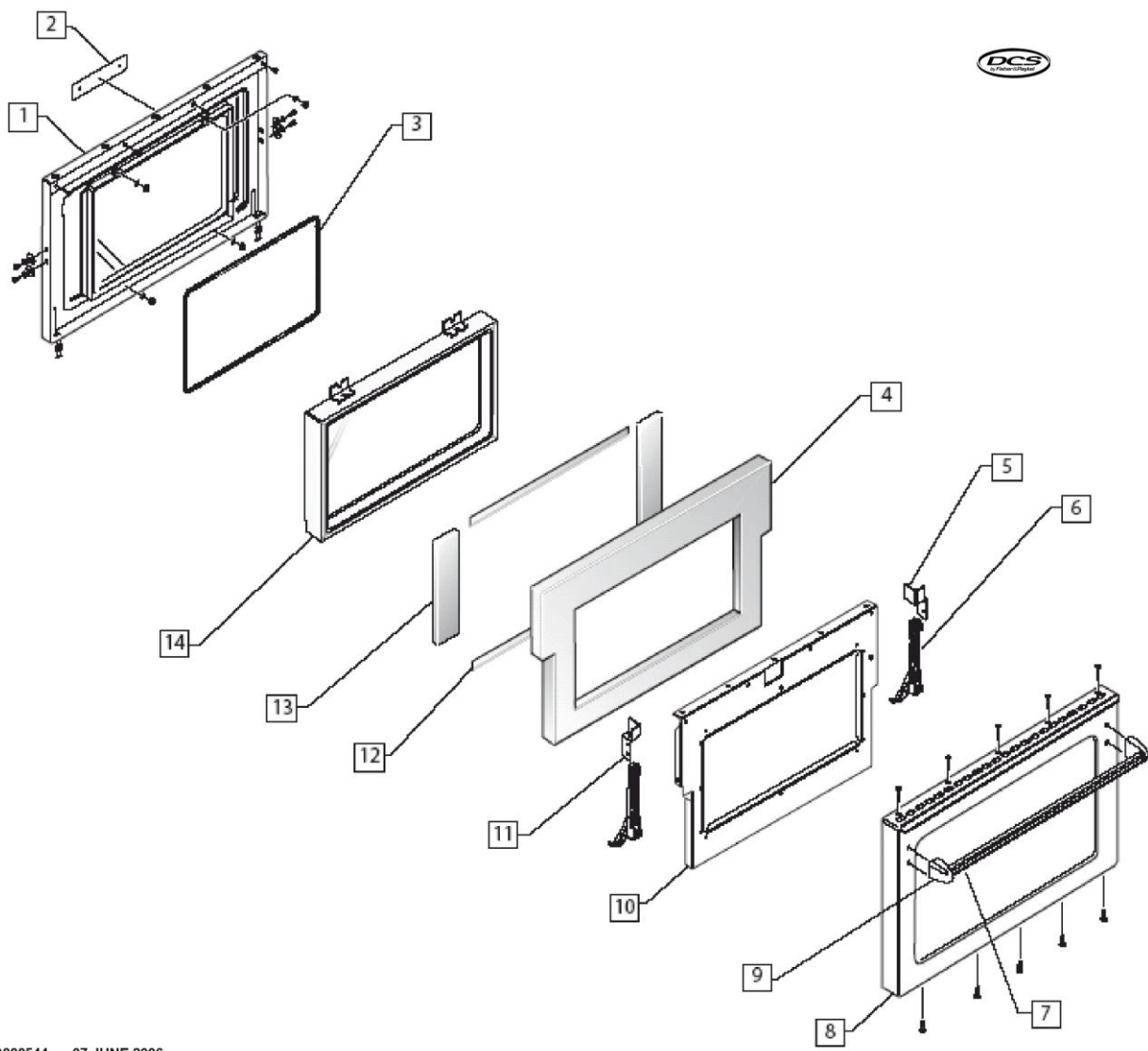


DWG000547 08 JUNE 2006

STRUCTURE COMPONENTS

REF	PART	DESCRIPTION
1	216836	BACK ISLAND TRIM RGS36
2	215993	SERVICE PANEL RG36/48
3	216917	BODY PANEL RGS36 R/H SS
4	216803	BRACKET DRIP PAN HANDLE
5	217468	HANDLE DRIP PAN W/A RGS366 SS
	217469	HNDL DRIP PAN RGS366 PLTD BR
6	216038	SHIELD LOWER HEAT RG36
7	215916	FRONT FRAME 36
8	210987	30 OVEN GASKET
9	211346	RECEPTACLE NUOVA STAR
10	216848	KICK PANEL W/A RGS36
11	216380	ANTI-TIP BAG ASSY PRG
12	211415	STRIKE & CATCH MALE
13	211416	STRIKE & CATCH FEMALE
14	212177	LEG LEVEL
15	214619	GASKET RETAINER
16	230417	BASE 36
17	216918	BODY PANEL RGS36 L/H SS
18	216002	HOUSING MOTOR RG304/48

DOOR COMPONENTS



DWG000544 07 JUNE 2006

DOOR COMPONENTS

REF	PART	DESCRIPTION
1	215853	DOOR LINER W/A PORC RD
2	214594	LATCH PLATE
3	218078	KIT WINDOW GASKET 12/24/27
4	216411	INSULATION
5	214589	HINGE BRACKET R/H
6	211514	DOOR HINGE 36 RANGE
7	215870	HANDLE OVEN DOOR
	215871	DOOR HANDLE RDS36 PLATED BRASS
8	219355	KIT OUTSIDE DOOR PANEL 36 SS
9	212245	END CAP DOOR HANDLE PLATED
	212246	END CAP DOOR HANDLE BRASS
10	216625	RETAINER INSUL. 27
11	214590	HINGE BRACKET L/H
12	216410	INSULATION CUT
13	216409	INSULATION CUT
14	211212	WINDOW PACK DOUBLE HB GLASS